



SCARLET | TECH



COMPANY PROFILE

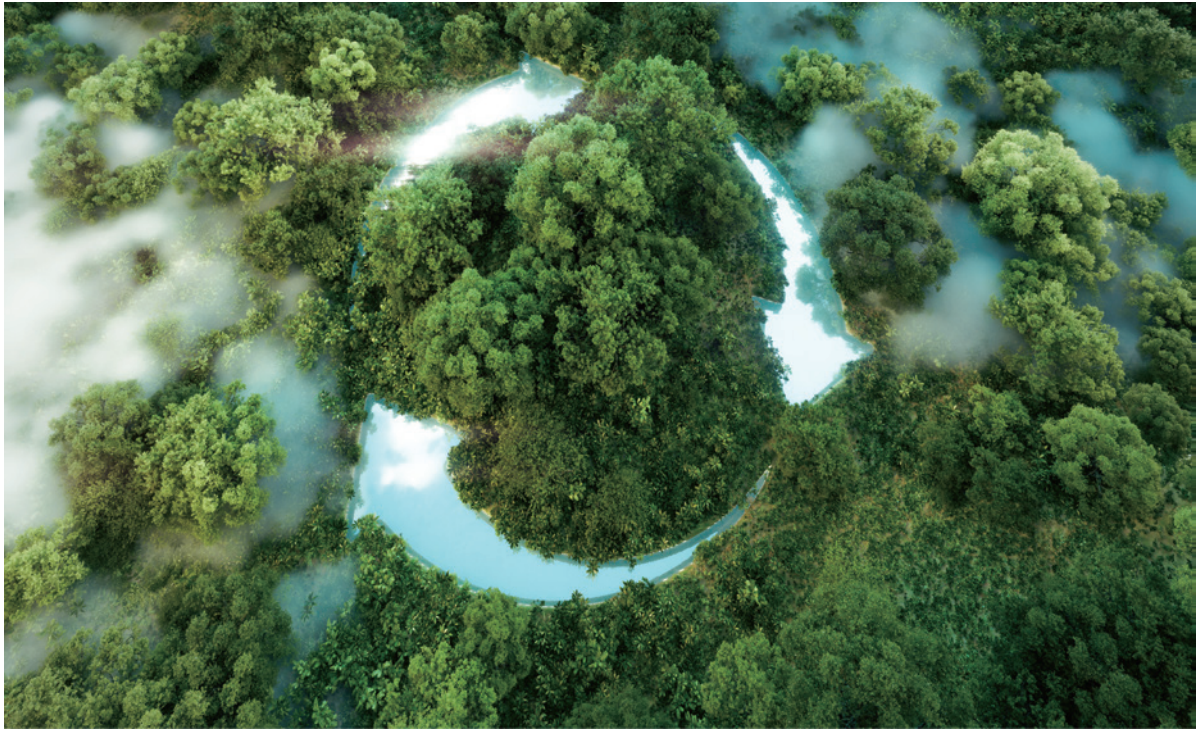
Scarlet Tech - A Leader in Environmental Health and Occupational Safety Instruments.

About Us



History

Founded in 2011 Taipei, Taiwan, Scarlet Tech designs, engineers and manufactures portable instruments for measuring and monitoring demanding environmental factors. The essential capability of Scarlet is the fusion of medical background and technology taste, along with the capacity of coordinating international academy and local manufactures to implement the design. Every Scarlet product undergoes rigorous functional test and calibration to give our customers accurate and reliable measurements. Scarlet Tech has developed our sales and services in Middle East, South East Asia, Africa, Australia, America and Europe since 2011. Our core value is to work hard for a safer environment and to make the world a better place.



ESG

At Scarlet Tech, our commitment to Environmental, Social, and Governance (ESG) principles is at the heart of our mission. We align our cutting-edge safety solutions with these values to enhance occupational safety and productivity. Our technologies are engineered to reduce environmental impact, promote community well-being, and uphold ethical governance practices. By embedding ESG principles into our core operations, we improve workplace safety while contributing to a sustainable and equitable future.

Our Clients

Our clients include large multinational corporates, small and medium enterprises, research centers, universities and public institutions from across the world. We nurture every client relationship with commitment, passion and integrity, which is the reason why most of our clients have been with us through years.





WINDPRO

Remote Wireless Anemometer & Control Systems


**Multi-Site
Live Data**


**Remote
Wind Alert**


**IIoT Integration
Output**

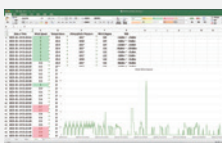

**Unlimited
Data Storage**



Max 1 km



Max 1 km



Data Logging

Export logged data in Excel



Relay Switches

Activate devices with 4 configurable thresholds



4-20mA Outputs

Industrial automation controls & data acquisition



RS232 Utility

Live readouts on PC-connected utility & outdoor signage



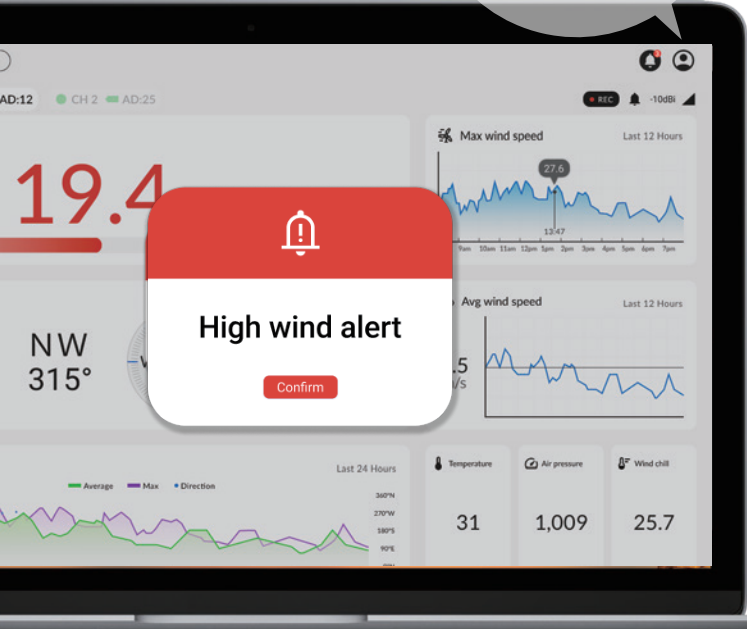
Bluetooth App

Live data & alert access on any iOS/Android devices

BEST SELLER



Email Notification
Notify users with real-time custom safety messages



WindPro Web Portal

The cutting-edge web-centric platform is compatible with all internet-connected devices, ensuring your team is able to access all essential site specific wind data from different locations on the go.



Access real-time data from multiple worksites on the go

Manage Operation Smartly with IIoT Safety Integration

WindPro can connect two sensors to one console simultaneously, make monitoring efficient with data displayed in two channels. Users have the ability to configure up to 4 thresholds for each wind sensor, activate the embedded flashlight and audible alarm, control equipments, and display live and reliable readouts of critical industrial metrics.

Real-Time Remote Alert & Email Notification

The highly configurable event notification function allows users to set up multiple warning thresholds based on event severity. Notify multiple remote users in real-time through sound alert and pop-ups from browser & custom emails.

Centralized Data Across Multi-Site

Through WindPro Web Portal, users can access visual graphs of historical logs directly online. The raw data uploaded from consoles can be exported to the user's preferred format for further analysis.

Worldwide Remote Data Access

WindPro Web Portal allows users to monitor wind data and inspect the hardware storage capacity, sensor battery power, and connection status of multiple WindPro devices. Ensure the entire deployment is performing as intended and simplify maintenance efforts across sites.




Comprehensive chart & table for analysis and trends prediction

BEST SELLER

WR-3 PLUS

Wind Speed Wireless Anemometer




**500 Meters
Wireless Range**


**Easy
Installation**


**Real-Time
Wind Alarm**


**Data
Logging**



Get real-time wind speed alarm in range up to 500 meters



Magnetic self-leveling mounting bracket for easy installation

Scarlet WR-3 Plus is an industrial-grade wireless anemometer for multipurpose applications and long-term environmental monitoring. Package includes a wireless long-range sensor and a portable data logger display suitable for both permanent and temporary installation.



The system measures current/average/maximum wind speed, temperature, wind chill, Beaufort scale, atmospheric pressure, and historic data graphics in high accuracy with customer selectable measurement units. Users can receive instant data and wind speed alarms at a distance up to 500 meters radius from the sensor.

- Audible & visual wind speed alarm
- Data recording up to 1 year
- Wind speed, temperature, air pressure measurements
- IP67 waterproof & impact resistant
- Fast & secure magnetic installation kit

Specifications	
Data Recording	64 MB
Logging Parameters	Wind speed, temperature, air pressure
Wind Speed Accuracy	±2% FS
Wind Speed Range	0.3~50 m/s

WL-21

Wind Speed & Direction Wireless Anemometer

-  **500 Meters
Wireless Range**
-  **High
Wind Alarm**
-  **Data
Logging**
-  **Wind Speed &
Direction Sensor**



Extract logged data in Excel with free software



All-in-one logger display designed for long-term data recording

Scarlet WL-21 is a stand-alone wireless anemometer that is versatile and durable for all types of rigorous industrial deployments.

The system measures and displays current/average/maximum wind speed, wind direction, temperature, wind chill, Beaufort scale, atmospheric pressure, and historic data graphic in high accuracy with multiple measurement units. Users are able to set wind speed threshold and receive instant alarm notification when wind speed exceeds the set threshold.

Recorded data can easily export to Excel for wind site analysis, with selectable intervals: 2s, 5s, 10s, 1min, 5mins, 10mins, 60mins.

- Measures wind speed, wind direction, temperature, air pressure
- Data recording up to 1 year
- Wind data with historical graphs
- 3-years sensor battery life
- 500m wireless transmission range
- Instant visual & audible wind alarm

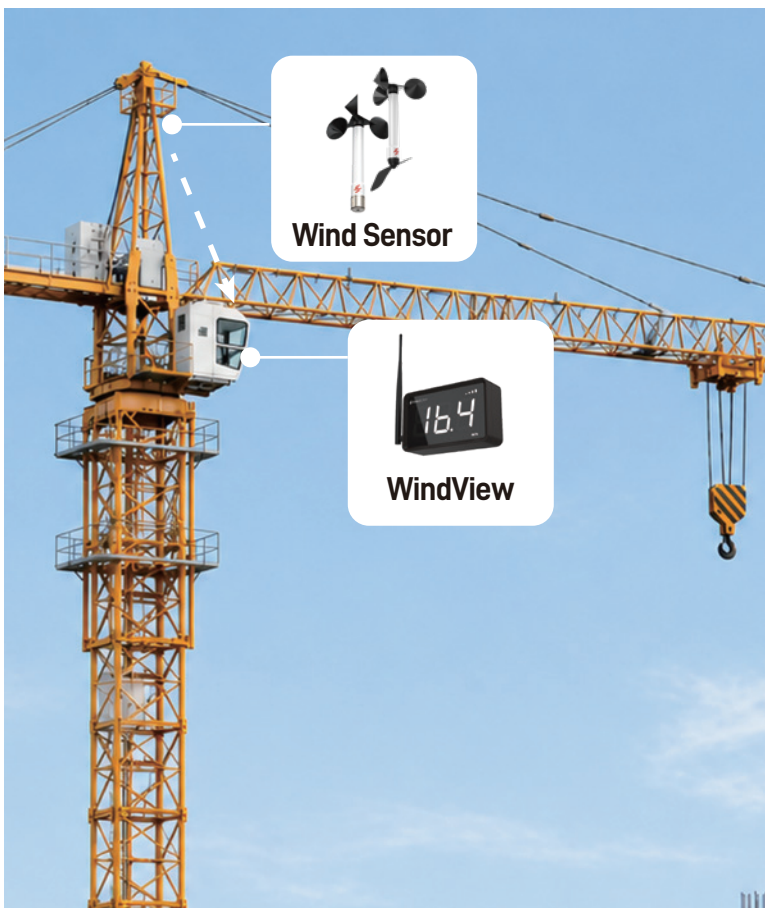
Specifications	
Data Recording	64 MB
Logging Parameters	(Avg/Max) wind speed, avg wind direction, avg temperature, avg air pressure
Wind Speed Accuracy	±2% FS
Wind Speed Range	0.3-50 m/s

WINDVIEW DISPLAY

Wireless Wind Speed Alerts LED Panel



WindView is a wireless wind speed display designed for continuous visibility and alerts on worksites. Featuring a 6-inch high-visibility display, WindView shows real-time wind data clearly at a glance. Adjustable brightness ensures readability in varying lighting conditions, while the built-in alarm instantly alerts personnel when wind speeds exceed set thresholds.



Fixed Mount Wind Alerts

With its compact, brightness-adjustable, AC-powered design, WindView offers flexible deployment in any setting, wall-mounted for worksite visibility or placed in a cabin or on a desk for personal monitoring, ensuring instant awareness across the entire team.



Large wind speed display for crane operators



Real-time high-wind alerts for site supervisors

E11 EX II 2 G EX ib IIB T4

Intrinsically Safe Wireless Anemometer



World's 1st
ATEX Approved



Wind Speed &
Direction Sensor



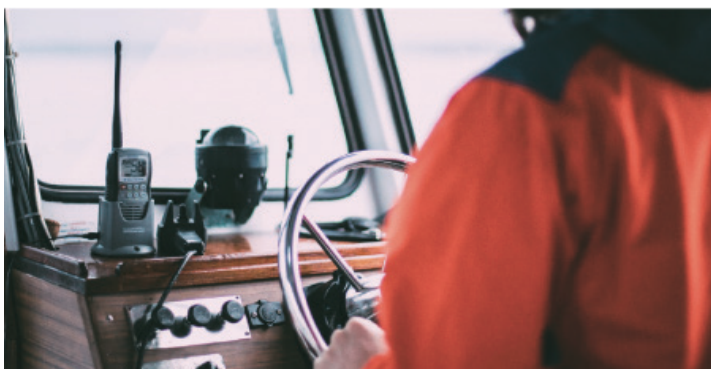
3 Alarm
Set Points



Easy
Installation



Intrinsically safe for applications in Zone 1 & 2 hazardous sites



Complied with ATEX standards for offshore and oil tank ships

Scarlet's WSD-E11 is ATEX-certified as EX II 2 G EX ib IIB T4 for use in hazardous areas Zone 1 and Zone 2. With a wireless transmission range of to 1,300 meters, users can remotely monitor wind situations at a safe distance from the non-hazardous areas to eliminate any potential dangers.

E11 features 3 different wind speed active warning and alarm set points, allowing users to customize their alarm systems. Based on pre-set values, the receiver can trigger local alarms and external indicators via four built-in relays when wind speeds exceed the threshold. Scarlet is committed to making your workplace both safe and smart.

- **Wireless intrinsically safe anemometer for hazardous worksites such as oil & gas, mining, manufacturing, and construction.**
- **ATEX EX II 2 G EX ib IIB T4 certified, safe for use in Zones 1 & 2.**
- **No cable interference or risks from mechanical operation.**
- **IP67 waterproof sensor endures all challenging environments.**
- **3 different active warning and alarm set points for customizable local alarm systems.**

Specifications

Measurement	Wind speed, wind direction, temperature
Wireless Range	Max 1,300 meters
Outputs	Relays, 4-20mA, bluetooth
Data Rate	Every 2 seconds

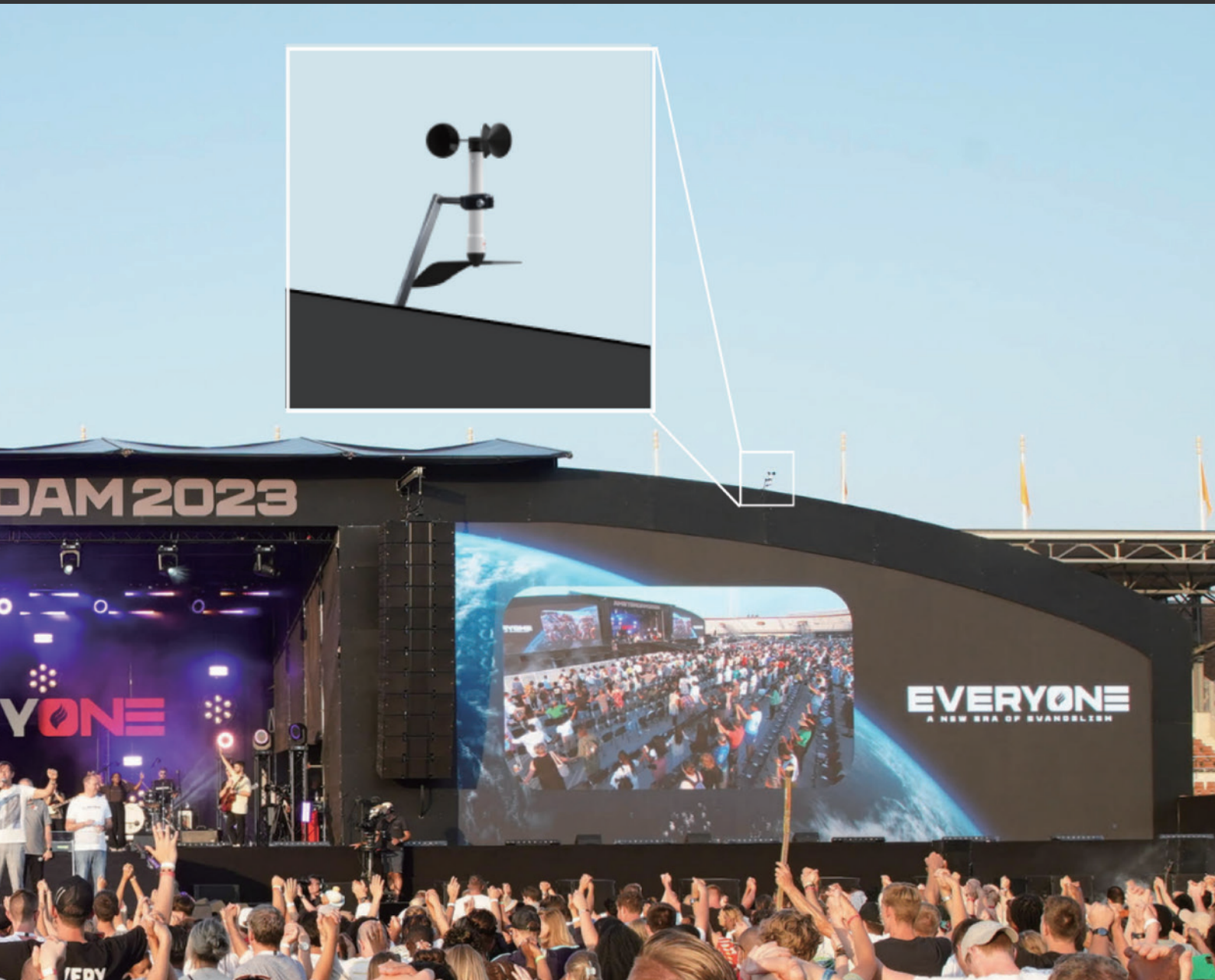
Wind Safety Solution for Mega Projects

Live Wind Speed & Direction Data with Instant Alerts

Scarlet's WindPro has been utilized in numerous mega projects, offering advanced wind monitoring solutions. SpaceX has used WindPro at their launch site; it was integrated into the safety protocols, allowing for the setting of multiple wind speed thresholds and triggering external alarms in real-time to ensure immediate safety responses.

Another application was during Amsterdam2023, a global event held at the Olympic Stadium in Amsterdam, where WindPro showcased its capabilities by monitoring two wireless wind sensors simultaneously. The wind data was accessible online via a user-friendly web portal, allowing users to track conditions, receive real-time notifications, and access historical data remotely, ensuring robust event safety management.





SKYTITAN

Wireless Luffing Crane Camera



**Live Crane
Top View**



**Long-Range
Wireless**



**25x Zoom
Control**



**Zoom Pedal
Control**



Enhanced Visibility with Precision Zoom

SkyTitan is a wireless camera system for luffing cranes, designed to eliminate blind spots and provide clear top-down view of critical lifting areas. With a 25x optical zoom camera and zoom pedal, operators can adjust view seamlessly while maintaining full control of crane operations, enabling precise observation of the load, landing point, and surrounding activity.

1 Boom tip



SkyTitan Camera (with damping bracket)

- 25x optical zoom in ultra-HD resolution
- Full-color night vision with smart image optimization
- Up to 60 hours of backup recording
- Direct power supply from the wireless station



Wireless Station (on Boom-Tip)

- High-speed 5GHz Wi-Fi wireless video streaming
- Stable, low-latency signal transmission



Reliable Crane Load Monitoring for Construction Sites

Streamlined Setup for Operators

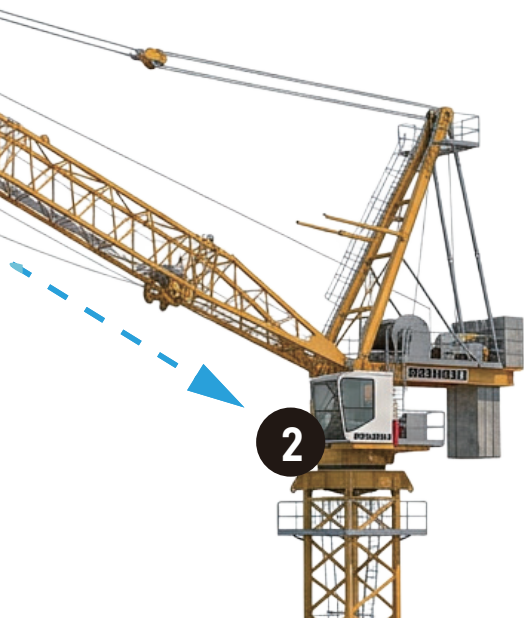
Integrated power bridge simplifies setup and operation by enabling the SkyTitan camera to be powered on directly from the Wireless Station, eliminating the need to manage power separately across components.

Enhancing Safety for Site Management

Continuous, high-clarity top view of the hoist, hook, and load zone provides clear oversight to identify hazards and reduce operational risks.

Consistent Performance in Demanding Environments

Rugged system design and optimized 5GHz wireless transmission ensure stable video delivery, even in complex industrial settings with high signal density.



Specifications

Resolution & Frame Rate	4K-Ready 8MP (3840 x 2160) @20fps / Ultra HD 5MP (2592 x 1944) @30fps (Real-Time)
Wireless Technology	Wi-Fi 5 GHz
Night Vision	Starlight-Level Low-Light, Full-Color Performance
Optical Zoom	25x Optical Zoom (f = 4.8 - 120 mm)
Video Storage	96 hrs (2K) in camera SD card + 30 days in Monitor Console

2 Cabin



Cabin Monitor (with Zoom Pedal)

- Real-time video stream of load & surrounding
- Easy zoom control for easy and precise activity observation

HERCULES PRO

Wireless Tower Crane Camera



Enhance Safety
& Efficiency



Ultra-Long
Range



Instant Audio &
Visual Feeds



Vast Camera
Configuration



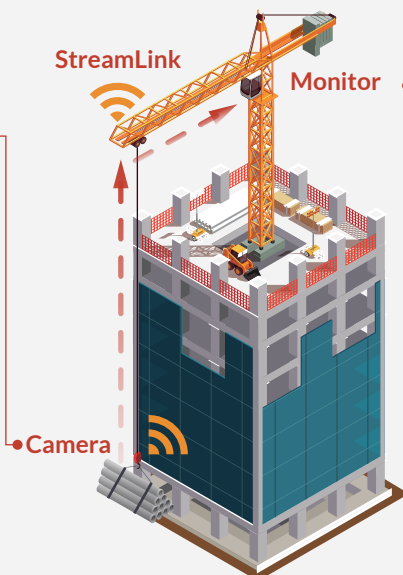
Ultimate Blind Lift Solution for Tower Cranes

HerculesPro is an industrial IoT-ready, long-range camera system designed to improve crane safety and construction sites productivity. The system consists of a high-resolution Starlight hook-mounted camera, industry-leading Wi-Fi 5GHz wireless transceivers, and a monitor to deliver live load-view positioning in the operator's cabin.

Block Camera



- 2K ultra-wide lens
- Clear vision in low-light
- 24/7 surveillance recording



Cabin Monitor



- Instant & clear video of loading area
- 5GHz wireless technology
- Up to 4 channels livestream
- Control and playback with a USB mouse



BEST SELLER



Optimizing Safety & Execution Excellence

HerculesPro's high-speed long-range transceiver extend communication range & bypass obstacles. The system fits for all cranes & challenged operations. HerculesPro revolutionizes the construction site to help everyone works safer and smarter.

Crane Operators

- Overcome blindspots & detect hazards
- Verify the loading area directly
- Optimize operation safety & efficiency



Safety Managers

- Maintain compliance & accountability
- Track & report with surveillance video
- Evaluate subcontractor performance



Senior Management

- Optimize & document project timeline
- Minimizing costly accidents
- Get real-time insight remotely

Specifications	
Resolution	2K QHD (2304 x 1296, 3 MP) / HD (1280 x 720, 1 MP)
Wireless Technology	Wi-Fi 5 GHz
Night Vision	Starlight full-color night vision
Video Storage	96 hrs (2K) in camera SD card + 30 days in Monitor Console
Camera Angle of View	110° Ultra-wide angle

Office



- Cloud-based video recorder
- 24/7 backup recording
- Multi-channel remote live monitoring
- Vast camera configuration for your network



Clear Night Vision with HerculesPro's 2K Starlight Camera

SV300

Wireless Mobile Crane Camera



Max 300 Meters
Wireless



Easy
Installation



Real-Time
Load View



Recording
& Playback

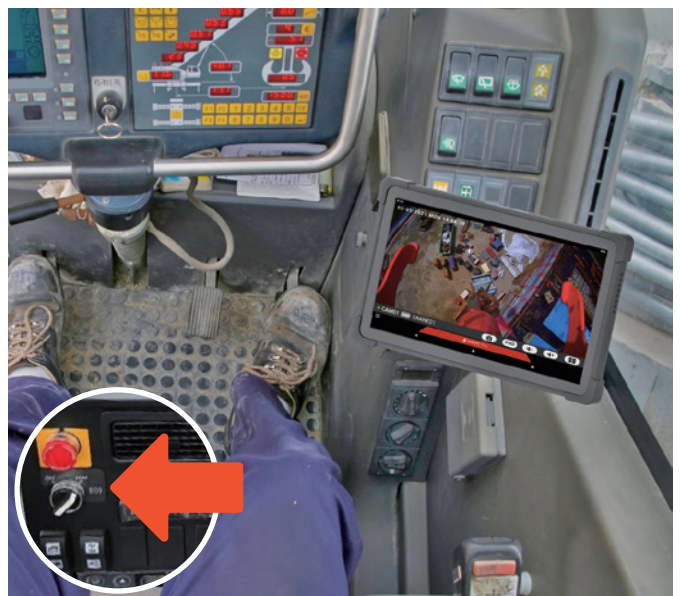


Elevate the Safety & Efficiency of Every Lift

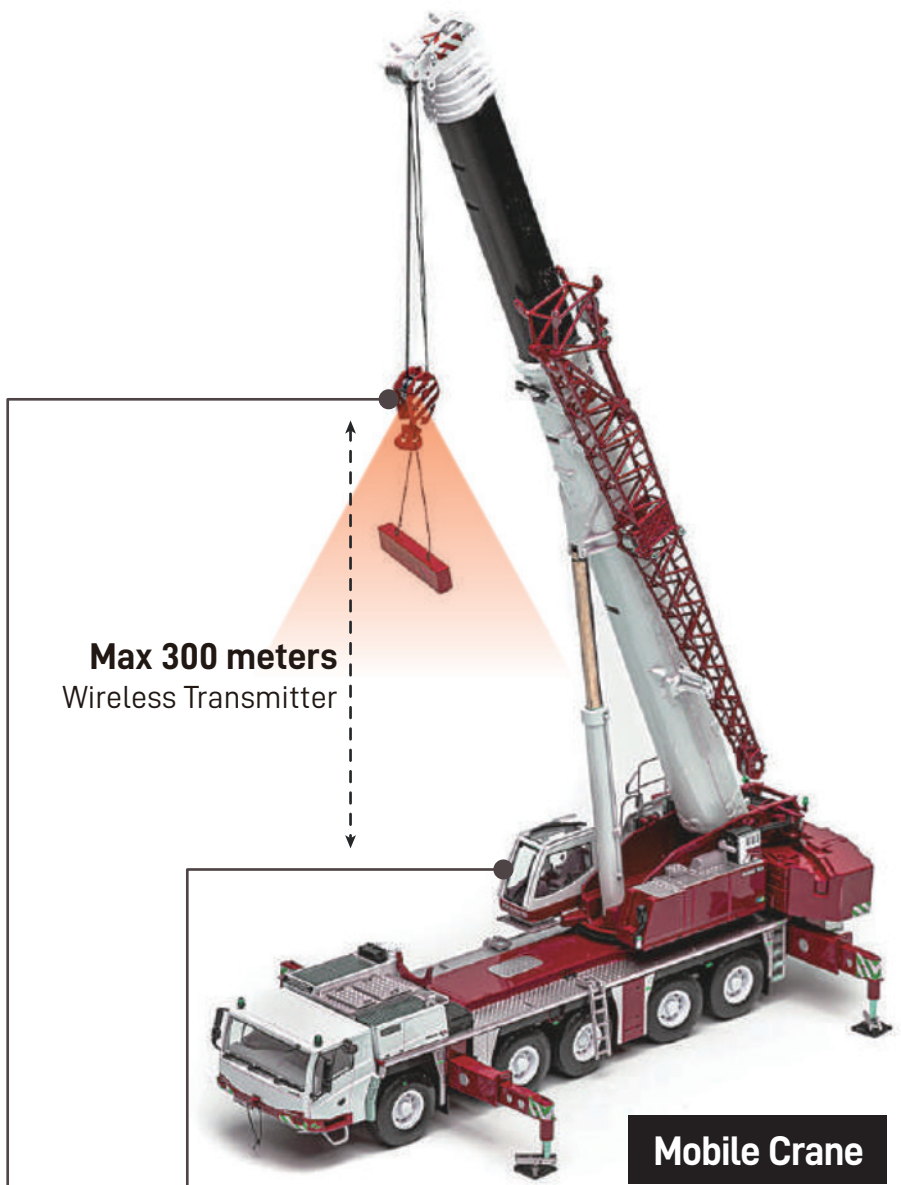
SV300 is the ultimate solution to elevate crane operation safety. The wireless crane camera offers real-time audio and visual footage of the loading area and effectively addresses potential hazards, allows operator confidently handle heavy loads in demanding conditions and safeguard individuals on-site.



Live visual under the load, no manual control required



Plug-n-play effortless installation



Max 300 meters
Wireless Transmitter

Mobile Crane



SV300 Camera



Tablet

Streambox

On the Hook Block

SV300 Camera

- Max 300 meters wireless transmitter
- Waterproof, robust aluminum housing
- SD card video recorder
- Rechargeable battery
- High-strength magnetic mount

In the Operator's Cabin

Tablet

- Live audio-visual feed
- 2K high-res wide ultra XGA resolution

Streambox

- High-speed transceiver
- Powered by DC 12V / cigarette lighter plug

The Key for Safe Lifting

Chosen by Flagship Companies

Acting as A Dashcam on Truss Cranes

The Truss Company uses the SV300 wireless crane camera to stream and record live video of lifting areas. This enables teams to quickly identify issues, reduce downtime, and prevent costly mistakes. Recorded footage can be shared with clients or reviewed for training, improving both safety and transparency on site.

Multi-Tower Crane Lift Monitoring at Complex Sites

At the Chickamauga Lock Replacement site, five tower cranes are in operation, requiring operators and the team in the site offices to monitor lifts remotely. The challenge is heightened by a traffic bridge that separates the construction area from the offices.

To ensure clear visibility, HerculesPro wireless cameras are installed on each crane. The system includes a control unit positioned between the construction area and the offices, enabling seamless video transmission to both the operators and the remote monitoring team.



Customized Vision for Your Crane

Scarlet's wireless crane cameras adapt to your project, backed by our experience supporting clients across all types of lifting environments. We ensure clear, reliable vision in every lift, because every crane operates differently and so should its camera system.

Camera mounting options

Adapt the camera setup to your crane type, such as adding a self-levelling mounting bracket that keeps the view steady and level during crane movement, ensuring consistent visuals.

Multi-camera configurations

Connect crane cameras across your operation for complete on-site visibility. Ideal for projects with several cranes, allowing a camera to be installed on each crane, with all video feeds streamed together for unified, real-time monitoring.

Remote monitoring

Monitor crane operations from your site office or anywhere.

With network video recording, crane cameras can be linked remotely to the site office, allowing supervisors to view live feeds, review operations, and ensure safety compliance, with full access to recorded playback and footage downloads.

Designed to Fit Their Applications



Wind Turbine Installation



Marine Cargo Handling



Construction Site Operation

Crane Safety Solutions Across the Site

Visibility, Awareness, and Control

Scarlet wind monitoring and crane camera solutions help teams monitor crane operations with better visibility and real-time data across construction sites.



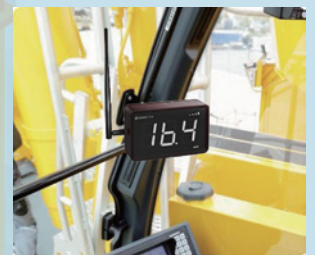
Camera



Anemometer



Camera



WindView

Wind speed at a glance, right where you need it.



Site Office Live Monitoring

Upgrade for multi-channel load feeds for proactive safety management.

WIRELESS ANEMOMETERS

- IP67 all-weather protection wind sensor
- Long-range wireless range
- Real-time wind data & wind speed alerts
- Data logging with file export to Excel format



WindPro **HOT**

The ultimate wireless anemometer & control system with 4-alarm and relays

Upgradeable for online monitoring access



Cloud-Based Wind Portal

Monitor Scarlet's devices online from site office or anywhere worldwide.



WR-3 Plus & WL-21

The cost-effective wind speed data logger for cranes

Wind direction sensor is available with WL-21

WIRELESS CRANE CAMERAS

- Eliminate crane blind spots
- Live video streaming over 5 GHz Wi-Fi
- No complex cabling, rapid deployment
- Video recording with playback



SkyTitan **NEW**

25x optical zoom wireless camera system with pedal control for luffing-jib cranes



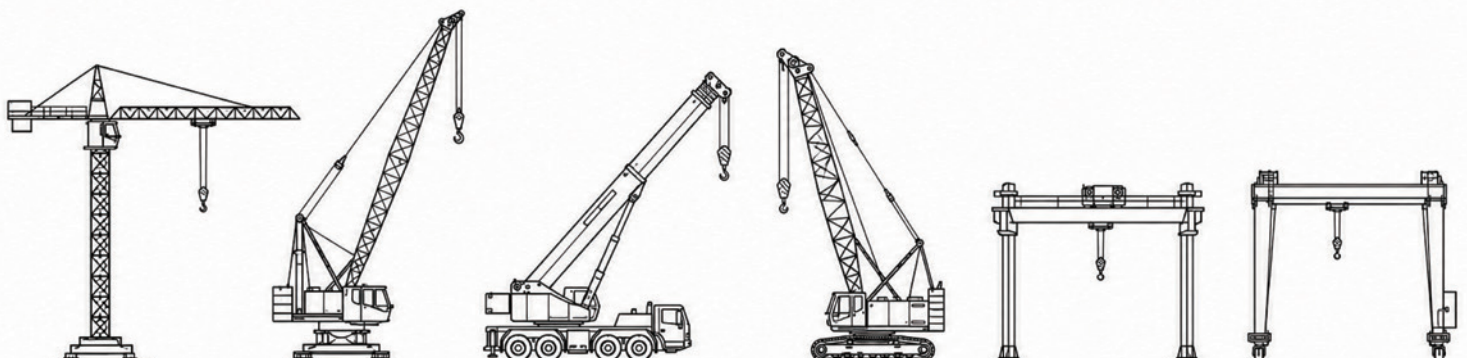
HerculesPro **HOT**

Long-range wireless hook camera with 2K live view for tower cranes



SV300

3-in-1 compact camera with built-in battery and transmitter for mobile cranes




TWL-1SV

Online Heat Stress Weather Station




Cloud-Based
Heat Monitoring

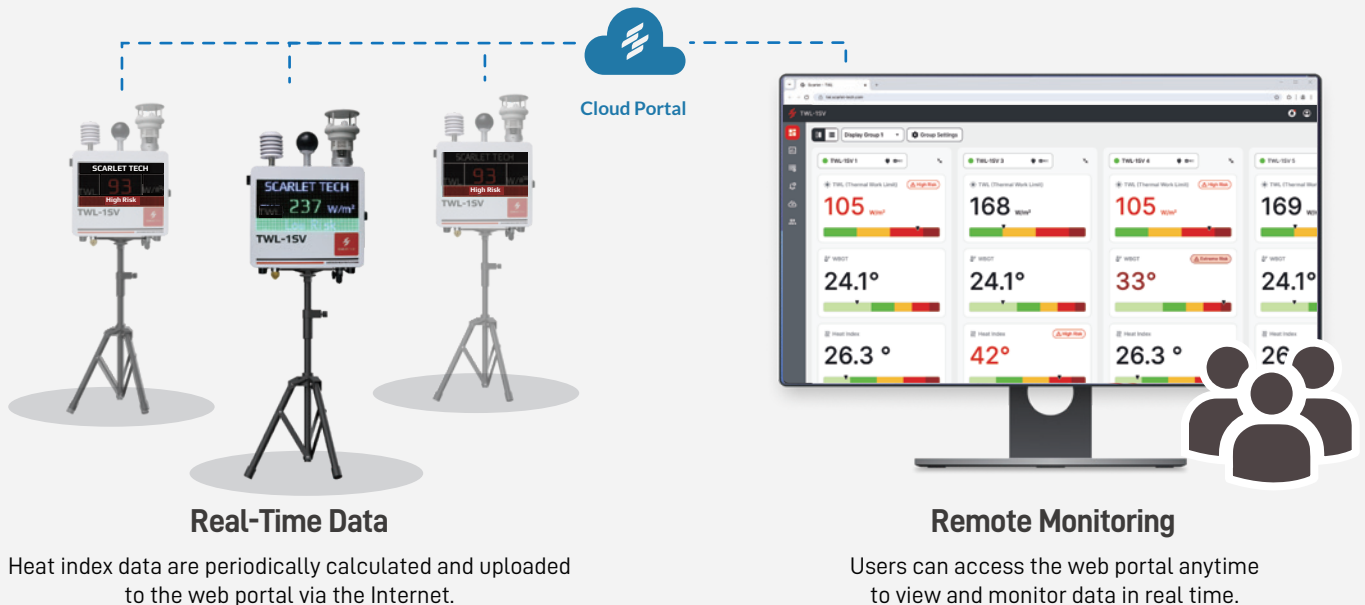

Instant
Alert


Data
Logging


Real-Time
Data

TWL-1SV is a cloud-ready heat stress weather station that enhances heat safety and supports remote management. It delivers TWL, WBGT, and HI heat index data via a built-in LED display with status alerts.

Comprehensive IoT-Driven Heat Safety Solution



ALL NEW



Ultrasonic Anemometer

- Wind speed & direction



Weather Sensors with Radiation Shield

- Air temperature & relative humidity



Black Globe Temperature Sensor

- Radiant heat temperature



Installation and Durability

- Quick installation
- IP67 rating for waterproof



Data Logging

- Cloud-based storage
- SD card for device backup

Specifications

Heat related index	TWL, WBGT, Heat Index
Measurement	Wind speed, wind direction, relative humidity, dry bulb & wet bulb temperature, globe temperature
Display	Integrated 16" color LED for instant status indication
Mechanical	Rugged IP56 metal housing with versatile tripod mount
Internet connection	Ethernet (RJ45) / 2.4GHz Wi-Fi / 4G LTE
Logger memory	Build-in SD card (Backup storage for cloud connection lost)

The illustration shows a worker in a yellow safety vest and hard hat holding a blue tablet. A red speech bubble with a white envelope icon and an exclamation mark points to the tablet, containing the text 'Low TWL Warning'. Below the illustration, the text reads 'Instant Alerts' and 'Receive TWL-based heat alerts via browser and email on any smart device.'



TWL-1S

Heat Stress Meter



Accurate &
Reliable



Risk
Indication



Smart Work
Management



Instant Visual &
Audible Alert



Suggests maximum level of work according local environment



Precise thermal monitoring. Perfect for construction, mining projects

World's First Thermal Work Limit Solution for Extreme Weather Conditions. The Best Heat Stress Management Tool for Project and HSE Managers.

Endorsed by Health Authority - Abu Dhabi, OHSAD, ADNOC group, and other major contractors as heat stress standard at worksite.

- Built-in TWL algorithm and official work-rest guidelines, shows risk level flags and completed instruction for work, rest, and hydration. Ensures all operations can comply with TWL value.
- The countdown timer shows the remaining time before a recommended rest.
- Simply export logged data by connecting TWL-1S to Windows PC via a USB cable.
- User-friendly monitoring dashboard, 3 different colors indicate 3 different risk levels based on the TWL value.

Specifications	
Measurement	Wind speed, relative humidity, dry bulb & wet bulb temperature, globe temperature, WBGT, TWL
Operating Range	-10 ~ 60 °C
Logger Memory	2,000 readings
Standard	Certified by CE mark following the EN 61326-1:2006



CASE STUDY

Trusted by Global Industrial Leaders

The Heat Stress Monitor Benchmark in UAE, KSA, and Other Regions

Scarlet's Heat Stress Monitor Solution has been trusted to enhance heat safety in the Middle East. Public health authorities in the UAE and Saudi Arabia have incorporated the Thermal Work Limit (TWL) index into their heat safety guidelines. Furthermore, leading enterprises such as Abu Dhabi National Oil Company (ADNOC), Emirates Group, and Al Fara'a General Contracting (AFGCO) have relied on the TWL-1S to prevent heat-related illnesses among their workers.



EM-30

Industrial Weather Station



Diverse Sensor
Integration



Long-Term
Monitoring



Quick
Setup



Data
Logging



Integrates Sensors and Camera for Site Monitoring



Remote Monitoring with E-mail Notifications

Adaptable to Every Worksite

EM-30 weather station is designed for construction and industrial environments. EM-30 can be integrated based on your monitoring needs, such as wind speed, heat stress, dust, noise levels, surveillance camera and other sensors.

Instant Monitoring & Data Access

Real-time data and alerts are shown on the LED display and logged automatically. All measurements sync to Scarlet's secure web portal, where users can monitor, download reports and receive instant notifications for remote monitoring.

Specifications

Dust Sensor	Measures PM2.5, PM10, TSP; laser-based light scattering; range up to 10,000 $\mu\text{g}/\text{m}^3$; resolution 0.1 $\mu\text{g}/\text{m}^3$
Operating Range	Range 30–130 dB; displays Leq, Lmax, Lmin, LFP
Ultrasonic Wind Sensor	Speed 0–45 m/s, accuracy ± 0.3 m/s; direction 0–360°; minimum detectable 0.5 m/s
Temperature & Humidity Sensor	Temp -40 to 120 °C (± 0.3 °C); humidity 0–100 % RH (± 2 %)
Barometric Pressure Sensor	Range 10–1100 hPa; accuracy ± 0.3 hPa
Dimensions	43(L) \times 22(W) \times 36(H)cm (main body)
Power Supply	100 to 240 V AC power adapter (default)

Purpose-Built Weather Station

Every worksite has different challenges, from construction zones with heavy dust to industrial plants managing air quality or temperature extremes. Scarlet has EM-30 to be ready transform into your personalized weather station, to provide environmental monitoring that fully design according to your needs through its modular design.

Modular & Adaptable Solutions

- Versatile sensors – Add or remove sensors.
- Data management – Store data locally or sync to Scarlet's online web portal.
- Displays & alerts – Choose how readings are shown, from LED indicators to integrated screens or sirens.
- Power solutions – Operate via direct power source, battery, or solar.



Humidity &
Temperature Sensor



Particulate
Matter Sensors



Ultrasonic
Wind Sensor



Wind Cup
Sensor



Surveillance Cam



Rain Gauge



Noise



Black Globe

Custom Build Support

Our team works with you to define the right configuration for your application, ensuring every EM-30 delivers precise, dependable results in the field.



ST-12D

Class 1 Sound Level Meter



IEC 61672:2013
Class 1



Colorful LED
Display



Octave Analyzer
Upgradable



64GB
Storage



Scarlet ST-12D is essential for noise safety across various applications to ensure compliance with local standards. It conducts high-accuracy sound measurements and records every data for further analysis. With a user-friendly interface for simple operation and setup, it is a top choice for occupational and environmental noise evaluation.

Professional Sound Analyzers for Comprehensive Noise Measurements

ST-12D calculates all crucial parameters with its built-in comprehensive analyzers. Each analysis page supports different display modes including graphical charts to provide a clearer picture of noise environment.



• Integral Analysis

$L_{xy,p}$, $L_{xy,max}$, $L_{xy,min}$, $L_{x,eq,T}$, $L_{x,eq,t}$, $L_{x,peak}$, $L_{x,E}$, E
 $X = A, C, Z$
 $Y = F, S, I, I10$



• Statistical Analysis

$L_{xy,p}$, $L_{xy,max}$, $L_{xy,min}$, $L_{x,eq,T}$, $L_{x,E}$
LN (N=1-99) : L5, L10, L50, L90, L95, SD, Ldn, Ld, Ln



• Exposure Analysis

E , TWA, L_{ex} , 8h, LAVG, DOSE



• Real-time 1/1 & 1/3 Octave Band Analysis (Optional)

$L_{x,p}$, L_{max} , L_{min} , $L_{eq,T}$
Center frequency range : 10 Hz ~ 20 kHz

BEST SELLER

Easy Data Management with USB or PC Software

With a large storage capacity, the ST-12D is able to save large measurement data and audio records. It enables direct data export to your PC via USB connection or retrieval through Scarlet's exclusive PC software.

The PC software also offers a simpler way to view historical records with charts and tables, replay audio recordings, and monitor real-time noise levels.



Specifications

Measurement Range	25 ~ 140 dB (143 dB C Peak)
Time Weightings	Fast, Slow, Impulse, I10
Frequency Weightings	A, C, Z
Accuracy	± 0.5 dB
Audio Recording	Record noise data in MP3/WAV format
Storage Capacity	4 GB internal memory 64 GB SD card
Measurement Run Time	1s ~ 99 h 59 m 59 s
Operation Time	24+ hrs battery life by 4 x AA alkaline batteries
Output Interface	USB type-C, Bluetooth, AC/DC signal, Serial
Display	240 × 320 pixel full-color display
Display update	Every 0.5 seconds

Direct Print Out Noise Data On-Demand

Scarlet provides a portable thermal printer that pairs with ST-12D via Bluetooth, allowing you to easily obtain a noise report immediately after the measurement.



Outdoor Noise Monitoring Kit

Make your ST-12D ready for field monitoring with the outdoor kit to ensure precise noise measurements, all protected within a waterproof enclosure. The kit features:

- Outdoor microphone with windshield
- Anti-perching spike prevents measurement interference
- Rugged housing shields against dust and rain
- Delivers accurate, consistent data even in harsh outdoor conditions



ST-591

IEC Standard Occupational Noise Dosimeter



IEC
61252-1:2017



1/1 & 1/3
OCT Band



Audio
Recording



PC Software
ScarletSound

ST-591 Noise Dosimeter is designed for reliable noise exposure monitoring in the workplace. Lightweight and easy to wear, it can be conveniently clipped to the shoulder or collar for accurate noise measurement throughout a full work shift.

Real-Time Noise Exposure Monitoring with 1/1 & 1/3 OCT Band



Noise exposure assessment

E, TWA, Lex, 8h, LAVG, DOSE, Kurt

Basic noise measurement

LXYp, LXYmax, LXYmin, LXeq,T, LXeq,t, LXpeak, SEL
(LXE), NLXpeak, LN (N=1-99) : L5, L10, L50, L90, L95,

Advanced band analysis

Real-time 1/1-octave & 1/3-octave analysis
Center frequency range: 16 Hz to 16 kHz (1/1-octave); 10 Hz
to 20 kHz (1/3-octave)

BEST SELLER

Compact Noise Monitoring for Daily Work



IP65 Certified

Dust and water resistance, ensuring consistent performance in demanding environments.



64GB Data Storage

storage for data logging and audio recording, with easy file export through USB-C or PC software



Specifications	
Fulfil Standard	IEC 61252:2017; IEC 61672-1:2013; IEC 61260-1:2014
Measurement Range	51 ~ 142 dB (A, C); 56 ~ 142 dB (Z); (68 ~143 dB C Peak)
Time Weightings (Y)	Fast (F), Slow (S), Impulse (I)
Frequency Weightings (X)	A, C, Z
1/1 & 1/3 OCT Band Analysis	Supported
Data Logging	Supported, with 64GB memory
Audio Recording	Record noise data in WAV
Operation Time	Over 13 hours on a fully charge
Power Charging	Rechargeable battery, USB type-C adapter (Charing time: < 4 hours)

Multi-Standard Compliance

ST-591 accommodates multiple occupational noise standards, such as OSHA, NIOSH, MSHA, and more. It measures the same noise exposure using dual

ScarletSound PC Software

ScarletSound is a free PC software designed for the ST-591, featuring:

- Data log management
- Octave band analysis review
- Audio playback
- Simple data export for comprehensive noise assessments



ST-11D

Class 1 Sound Level Meter



User
Friendly



Precise
Measurement



Data
Logging



IEC 61672:2013
Class 1



Ideal for long-term environmental measurements



Widely adopted for industrial noise surveys

ST-11D complies with the latest standard IEC 61672:2013. Safeguard and ensure employees' hearing & occupational safety at the front line.

With its low power consumption and support for USB port charging, ST-11D offers extended hours of usage. It measures and displays the Leq value, while also providing information on equivalent continuous sound levels and sound exposure for selected time periods.

Equipped with intelligent integrating algorithms and a wide measuring range of 27 ~ 140dB, making ST-11D highly capable for use in the most challenging industrial environments. Its outstanding performance sets it apart in the market and has been a best-selling model over the years.

- Data logging function
- Wide measurement range
- Easy data export via USB/RS-232 serial port
- Long term measurement

Specifications

Measurement Range	27 ~ 140 dB
Frequency Range	10 Hz ~ 20 kHz
Accuracy	±0.7 dB
Display Update	Every second

ST-15D

Class 1 Sound Analyzer



IEC 61672:2013
Class 1



Monitoring
Software



1/3
Octave



GPS
Analyzer



Locate noise source with GPS



Smart software for sound data management

Scarlet ST-15D is a professional-grade sound level meter that complies with the IEC 61672:2013 Class 1 accuracy and the ANSI/ASA S1.4 Type 1 International standard.

ST-15D features a GPS analyzer and octave band filters, enabling precise sound analysis and identification of noise sources. It is equipped with a 32 GB SD card, capable of storing both audio recordings and measuring data. ST-15D allows for simultaneous measurement of multiple noise parameters, offers 4 different running modes to start measuring, and supports a user-friendly graphical chart display mode. Additionally, users can do real-time monitoring and data exportation with computers through the ScarletSound PC software.

This model can be upgraded to include advanced analysis features such as 1/1 & 1/3 octave band filter, and FFT analysis.

- Data logging & audio recording function
- 24-hour automatic monitoring
- Professional PC software - ScarletSound
- Advanced analysis functions

Specifications	
Measurement Range	20-142 dB (145 dB Peak)
Frequency Range	10 Hz ~ 20 kHz
Accuracy	±0.5 dB
Display Update	Every 0.5 seconds

ST-21D

Class 2 Sound Level Meter



ST-21D fully complies with the latest Class 2 standard, IEC 61672:2013. With advanced integrating algorithms, it is specifically designed to withstand industrial conditions.

ST-21D serves as a perfect solution for complying with noise regulations and standards, it is capable of calculating equivalent continuous sound level and sound exposure for a chosen time period, an ideal tool for various applications including basic environmental measurements, entertainment, and vehicle noise assessment.



Easy Data Exportation



Class 2 IEC 61672



ST-25D

Class 2 Sound Analyzer Meter



Scarlet ST-25D features statistical analysis and integrated measurement functions. It enables simultaneous measurement of multiple noise indices to suit different assessment needs. With optional octave band spectrum analysis upgrades, ST-25D provides even more in-depth information. It also supports 4 selectable running modes that give users enhanced flexibility and utility.

ST-25D serves as a robust data logging device with its built-in 32 MB flash memory and 32 GB SD card storage. Saved files can be opened directly in Excel for easy reporting and data access.




PC Software - ScarletSound



Wide Measurement Range



We test and calibrate every single instrument to meet the highest standards. Because... 



SAFETY
IS
BEYOND
MEASURE



SCARLET | TECH

+886-2-2709-2363
info@scarlet.com.tw
www.scarlet-tech.com



4F-3, No. 347, HePing E Rd 2nd Sec, DaAn Dist, Taipei Taiwan 106