

COMPANY PROFILE

**Scarlet Tech - A Leader in Environmental Health and
Occupational Safety Instruments.**



About US



History

Founded in Nov, 2011, Taipei, Scarlet Tech Ltd designs, engineers and manufactures portable instruments for measuring and monitoring demanding environmental factors. The essential capability of Scarlet is the fusion of medical background and technology taste, along with the capacity of coordinating international academy and local manufactures to implement the design. Every Scarlet product undergoes rigorous functional test and calibration to give our customers accurate and reliable measurements. Scarlet Tech has developed our sales and services in Middle East, South East Asia, Africa, Australia, America and Europe since 2011. Our core value is to work hard for a safer environment and to make the world a better place.



Goals

We care about health, safety and environment. We listen to our customers, solving their problems. Our customers stay with us because of our flexibility and excellent support. We want to improve occupational safety & health by leveraging wireless and IoT technology. We deliver tailor-made, state-of-art instrumentation to help our clients focus on their work.

What We Do

- Instruments & Meters
 - Software design & development
 - Smart phone applications design & development
 - Total solutions for worksite safety
 - Web-based solution for site wind monitoring
 - Customized weather station design
-

Our Clients

Our clients include large multinational corporates, small and medium enterprises, research centers, universities and public institutions from across the world. We nurture every client relationship with commitment, passion and integrity, which is the reason why most of our clients have been with us through years.





TWL-1S

Heat Stress Meter



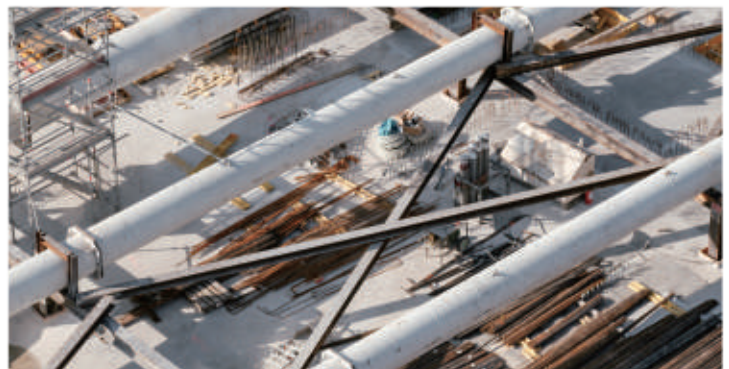
World first Thermal Work Limit Solution for Extreme Weather Condition. Best heat stress management tool for project and HSE managers.

Endorsed by Health Authority - Abu Dhabi, OHSAD, ADNOC group and other major contractors as standard heat stress monitors at worksite.

- Built in TWL algorithm and official work-rest guidelines, shows risk level flags and completed instruction for work, rest and hydration. All operations can comply with TWL value
- Quick button to start data logger function. With Free software TWLIT, users can download data in csv format for further analysis
- User-friendly monitoring dashboard, 3 different colors indicate 3 different risk level based on the TWL value. Countdown timer shows the remaining time before a recommended rest
- Instant alarm pager is available in TWL-1SR model; supports wireless transmission of warning up to 200 meters



Smart Work/HSE Management. Construction, mining projects



Suggests maximum level of work according local environment

Apollo M1

Wireless solar Crane Hookview Camera



Full HD
Resolution

IP67
weatherproof

Easy
Installation

Solar
Powered

Scarlet Apollo M1 Wireless Solar Crane Hookview Camera provides the ultimate safety assurance and enhances the efficiency of crane operations by optimizes site awareness, eliminating blind spots, and improving communication.

With the high-powered magnets, the robust and low-maintenance system can be easily installed on hook blocks and any metal surface. The high-efficiency solar battery bank can power the camera for the entire construction timeframe without additional charging. The wireless transmission delivers instant FHD video and audio of the load view and surroundings directly to the LCD touchscreen within 500m. The operator can fully in control of the situation and make immediate adjustments

Wireless Camera:

- 2.4GHz long-range wireless transmission distance up to 500m
- Anti-fog lens, encapsulated in IP67rated shock-resistance housing
- Infrared wide-angled camera deliver clear image in all conductions

LCD Touchscreen Monitor:

- Rechargeable 10" LCD touchscreen for camera remote control
- 1080p Full HD live video & audio feed
- SD storage for video playback (256G for 14 days of recording time)

Smart Solar Powerbank:

- Low-maintenance. IP67 certificated weatherproof. Shock-resistance
- High-efficiency waveguide technology, optimizes energy transfer
- Smart power management allows 30 work hours without sunlight



Fast & Easy magnetic mounting, fitted to a variety of cranes.



Eliminate blind spots & improve communication of operations.

WR-3

Wireless Anemometer



WR-3 applies state-of-art 433/868/900 MHz radio frequency wireless technology to ensure better performance for barrier penetration and achieving long range transmission. The ultra-long 400 meter transmission distance makes WR-3 a perfect gadget to help users monitor wind speed on crane/lift/towers and prevent accidents from high wind risks. Data transmit rate: every 2 seconds.

The sensors automatically send data when wind cups revolve. It goes to sleep mode when wind cups stop for more than 6 hours to save power consumption.

- **Cost-effective wireless wind speed monitoring solution for crane safety and construction site wind monitoring**
- **Free cable design. Free risks from machine operation. 400 meter wireless data transmission distance between sensor and receiver**
- **90dB Instant alarm at exceed wind speed. Reduce dispute and crane downtime**
- **Anti-slip handheld receiver with large user friendly LCD display**



Adjustable display holder for secure receiver placement



Magnetic self-leveling mounting bracket for easy installation

WL-11

Wireless Anemometer



- easy-to-use solution for wind site evaluation
- shows and store all vital wind data
- range up to 400m (up to 1300 m with optional antenna)
- easy installation without running cables
- replaceable wind cups
- 24h wind speed and temperature history graphs
- 7 days history of instant and average wind speed

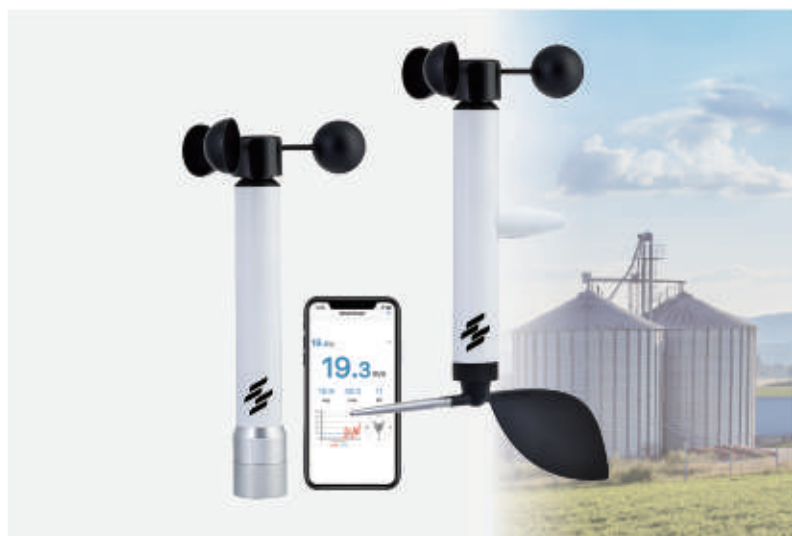


24/7 Data logger



range up to 400m-1300m
(up to 1300 m with optional antenna)

Wind smart



Scarlet Wind Smart wind meter turns your smartphone into a high-tech meteorological tool. The professional cup anemometer takes the real-time data of current, average, maximum wind speed, temperature, and wind direction (optional). The sensor can operate with multiple smart devices at the same time. The user may set an audible alarm based on the wind speed value. Every unit has been through wind tunnel calibration to ensure precision.



Bluetooth



Free App
(Available on both iOS and Android)

WL-410/WL-410XB



- Long range transmission distance. Up to 400 m (410XB up to 1300m)
- Extremely easy mounting with magnetic & self-leveling mounting
- 3 years sensor battery life.
- Integrated alarm & pre-alarm warning lights
- Built-in audible alarm
- 3 programmable alarm relay outputs
- Backlighted graphic LCD with large digits
- Bluetooth 4.0 in WL-410XB transmit measured data to smartphone.
- Free App for iOS and Android phone tablet



Flexible & Customized



range up to 400m-1300m
(410XB up to 1300 m)

WindPro

Wireless Anemometer



Scarlet WindPro is a stand-alone system that helps users get real time site wind information, anywhere, from any smart device by simply logging into Scarlet web portal. The novel Smart Wind Monitoring System perfectly solves the spatial limitation that has long troubled users from large-scale constructions, marine ports and offshore sites.

- **Web-based Online Wireless Wind Monitoring System. Ideal monitoring tool for large-scale project management in industrial, construction, marine, HSE**

- **Synchronized wind data on receiver display and web portal**
- **Multiple users can acquire realtime and 24/7 history data from individual PC, laptop, smartphone, and tablet through web portal**
- **Long transmission distance 400 meter or 1300 meter with external antenna**
- **Local Wifi transmits data from receiver gateway to cloud web portal. No more spatial limits between observers and site wind condition**



Scarlet Web Portal. Synchronized live/history data



Suggests maximum level of work according local environment

E10/E11

Intrinsically safe Wireless Anemometer



Scarlet's WS-E10/WSD-E11 are certified as EX II G EX ib T4 by ATEX and IECEx approvals for use in hazardous areas zone 1 and zone 2. The user can monitor the wind situation at a safe distance from the non-hazardous area to eliminate any potential danger.

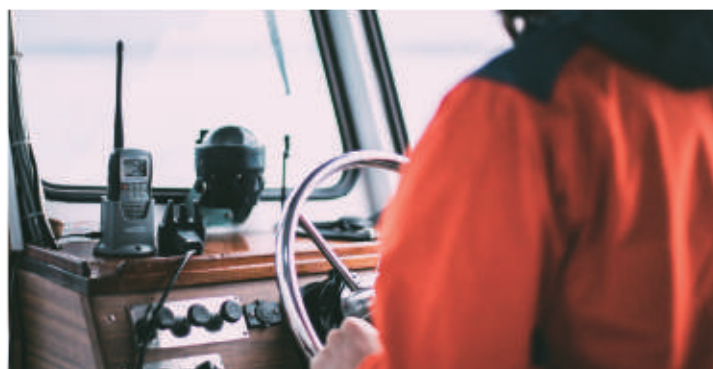
Wireless transmission distance up to 400 meters/ 1,300 meters (XB model). Easy-to-use solution for wind site evaluation in remote supervision. With three different active warning & alarm set points, users can customize their alarm systems.

Scarlet explosion-proof wireless anemometer allows external devices connectivity. Based on the pre-set values, the receiver can trigger local alarms and external indication via 4 built-in relays when the measured wind speeds exceeding the threshold. Scarlet aims to let you manage your workplace not only safe but smart.

- **First of its kind. Wireless Intrinsically safe anemometer for hazardous worksites such as oil & gas, mining, manufacture and construction**
- **ATEX 2G Ex ib IIB T4 Certified. Safe to used in Zone 1&2**
- **wireless transmission distance up 1300 meters. No cable interference, no risks from mechanical operation**
- **IP 67 rated waterproof wind sensors, stands in all harsh environments**
- **3 different active warning & alarm set points, allows customization with local alarm system**



Ideal for safety management in Zone 1/2 hazardous worksites



Complied with MESQAC standards for offshore and oil tank ships

SL-27 Torch

Explosion-proof
Rechargeable Torch



- Cree XPE-R4 LED
- Battery charging can be cycled 1000 times
- Anti-drop and shock-proof structure
- Special arc design to break the glass in emergency situation

- Waterproof sealing ring, can be used normally under water.
- Rechargeable
- Long lifespan of 100,000 hours
- Lumens : 100

| SL-27 | Low | Strobe | High |
|-----------------|---------------------------------------|-------------------------------------|-------------|
| Battery | 1865D Rechargeable Battery | | |
| LED power | 3 W | | |
| Light Source | Cree XPE-R4 / Lifespan of 100,000 hrs | | |
| Charging time | 140lm | 6hr | 323lm |
| Working Voltage | 184m | 4.2V | 288m |
| Charger | 13hrs | 100 - 240 V AC (50 Hz) power supply | 6hrs 30mins |
| Working Time | 8hr | | |
| Beam Distance | unknow | | |
| Light Output | 100 lm | | |
| IP Rating | IP67 | | |
| Weight | 182.4 g (Battery included) | | |
| Dimension | 137.7 x 33 x 33 mm | | |
| Lumens | 100lm | | |
| Lens Material | High-Hardest Aluminum Alloy | | |

SL-11 Headlamp



Explosion-proof Torches

- 90-degree tiltable head
- Available for two LED colors:
White: Provide clear and bright light
Amber: Suitable for use in dark fog or thick smoke areas

| SL-11 | Low | High |
|---------------|---|------------|
| Battery Size | 3 x AAA | |
| Light Source | Cree XP-G2 LED / Lifespan of 50,000 hrs | |
| Mode | High / Low / Off | |
| Light Output | 100lm | 216lm |
| Beam Distance | 75m | 100m |
| Run Time | 12hrs 12mins | 5hrs 8mins |
| IP Rating | IP67 | |
| Lumens | 216 | |
| Lens Material | Polycarbonate | |
| Helmet Band | Nylon | |



SL-21 Torch



- Stainless belt/pocket clip
- Valve design for hydrogen gas release

| SL-21 | Low | High |
|---------------|--|-------|
| Battery Size | 4 x AA | |
| Light Source | Cree XP-E LED / Lifespan of 50,000 hrs | |
| Mode | High / Low / Off | |
| Light Output | 32lm | 133lm |
| Beam Distance | 110m | 231m |
| Run Time | 69hrs 10mins | 6hrs |
| IP Rating | IP67 | |
| Lumens | 133 | |



SL-23 Torch



- Aluminum heat sink to enhance LED efficiency
- Special reflector for long-range lighting

| SL-23 | Low | High |
|---------------|---|-------------|
| Battery Size | 4 x AA | |
| Light Source | Cree XP-G2 LED / Lifespan of 50,000 hrs | |
| Mode | High / Low / Off | |
| Light Output | 140lm | 323lm |
| Beam Distance | 184m | 288m |
| Run Time | 13hrs | 6hrs 30mins |
| IP Rating | IP54 | |
| Lumens | 323 | |



ST-11/11D

Class 1 Sound Level Meter

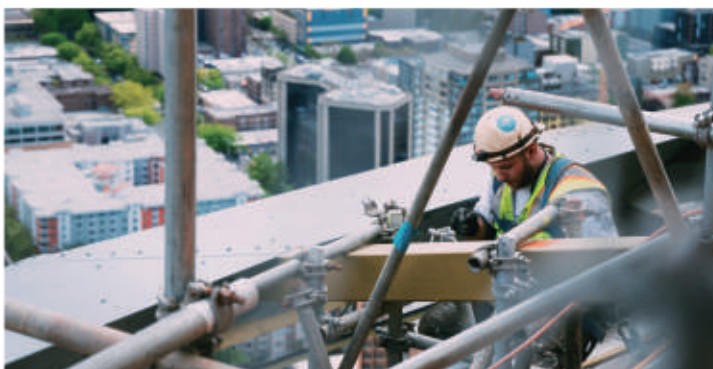


ST-11/11D complies with the latest standard IEC 61672:2013. Safeguard and ensure employees' hearing and occupational safety at the front line. Data Logging and Sound Recording function in ST-11D enables further analyzing long period data. Storage supported by built-in memory or connection with hard-drive. Low power consumption and USB port charging allow long hour usage. Measures and displays Leq value. Shows Equivalent Continuous Sound Level and Sound Exposure upon chosen period.

Built-in smart integrating algorithms and wide measuring range 27-140dB competent in most rigorous industrial use. Through the user-friendly interface and various output options, ST-11/11D can be controlled by telemetry and enables external system integration. Lightweight, portable, and perfectly formed. Scarlet ST-11/11D outstands the market with excellent performance.

- Class 1 Complies with IEC-61672-2013
- 10 Hz-20k Hz frequency range
- 27 dB-140 dB measurement range

- Data logging & record function(St-11D)
- Measures and displays Leq value
- Long term measurement



Ideal for long-term environmental measurements



Widely adopted for industrial noise surveys

ST-109

Sound Level Meter



ST-109 Class 1 Sound Level Meter is designed to meet the requirements of IEC 61672-1:2002 (or the equivalent BS EN 61672-1:2003). ST-109 Sound Level Meters not only suitable for environmental noise measurements but can also be used for occupational noise measurements such as the UK Controls of Noise at Work Regulations or the OSHA Occupational Noise standards

- Fast, slow, impulse response times.
- Wide frequency range: 10Hz~20KHz.
- Wide measurement range: 30dB~130dB
- Wide dynamic range: 100 dB
- A / C / Z frequency weighting
- Sound Exposure Level SEL, Peak, Reverberation Time (RT60)
- Data logger function, stored up to 32,000 records, auto-mating
- Remote control through connected PC



ST-130



The Scarlet ST-130 Noise Dosimeter is the ideal tool to carry out occupational and industrial hygiene noise measurements and provide a unique solution for these applications. ST-130 is designed to meet the standard dose measurement of OSHA, IEC and ISO regulations. To measure long-term noise exposure, the ST-130 comes with small, lightweight, cable-free designs and can be worn on the shoulder for minimal inconvenience. Scarlet ST-130/S series offer the low cost but high performance noise dosimeter for all applications. To know more about our range of compact and convenient noise measurement products, please get in touch today.

- Perform OSHA and IEC noise accumulation surveys
- 6 built-in standard dose measurement setups: OSHA/MSHA/DOD/ACGIH/ISO85/ISO90
- Data logger up to 10,00,000 readings
- Adjustable criterion level, exchange rate & threshold
- Sampling times between 1 sec to 2 hr
- Stores up to 10,000 dose meter survey results
- Dose Meter Mode: record time stamp, %Dose, TWA8, LEP, 8h, Leq, SEL, LN%, SPLmax, SPLmin, PeakMAX
- Sound Level Meter mode: Leq, PeakMAX & SEL
- USB interface. Support Windows XP / Vista / 7 / 8



SCARLET | TECH



TEL: +886-2-2737-2363

E-mail: info@scarlet.com.tw

Website: www.scarlet-tech.com

Address: 4F-3, No. 347, HePing E Rd 2nd Sec, DaAn Dist, Taipei Taiwan 106

